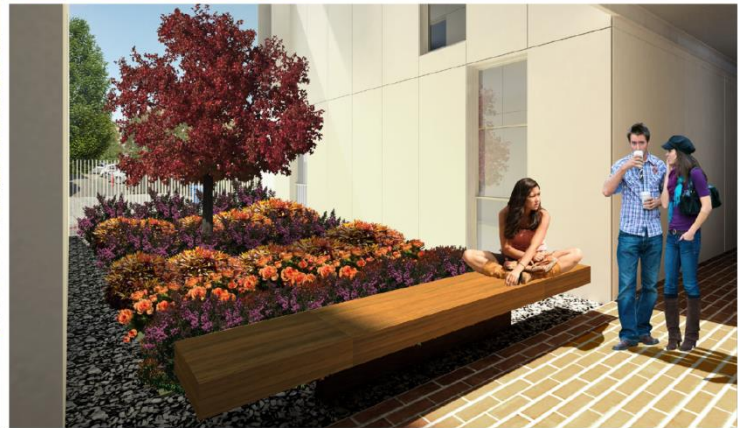


ZAB Hearing

October 10, 2013



Garden Village | 2201 Dwight Way

The logo graphic consists of a dark blue square on the left and a lighter blue square on the right. The lighter blue square contains a stylized, abstract representation of a nautilus shell, composed of several smaller squares in various shades of blue and white, arranged in a grid-like pattern.

nautilus group









COLLIERS PARK
516-432-3875
www.collierspark.com

Fulton St 2500

Dwight Ave 1200

Case

Handwritten graffiti on the building facade, including the word "FIND" in large red letters, and various other tags and symbols in white, blue, and red.





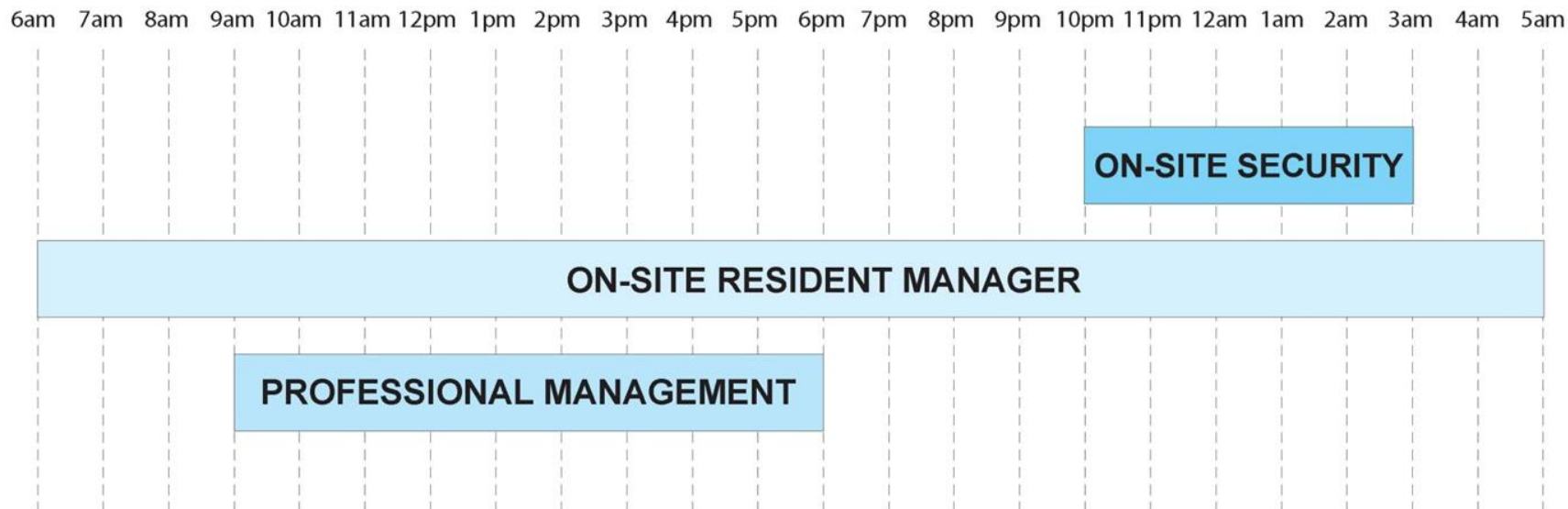






Design Matters
Full Kitchen
Washer & Dryer



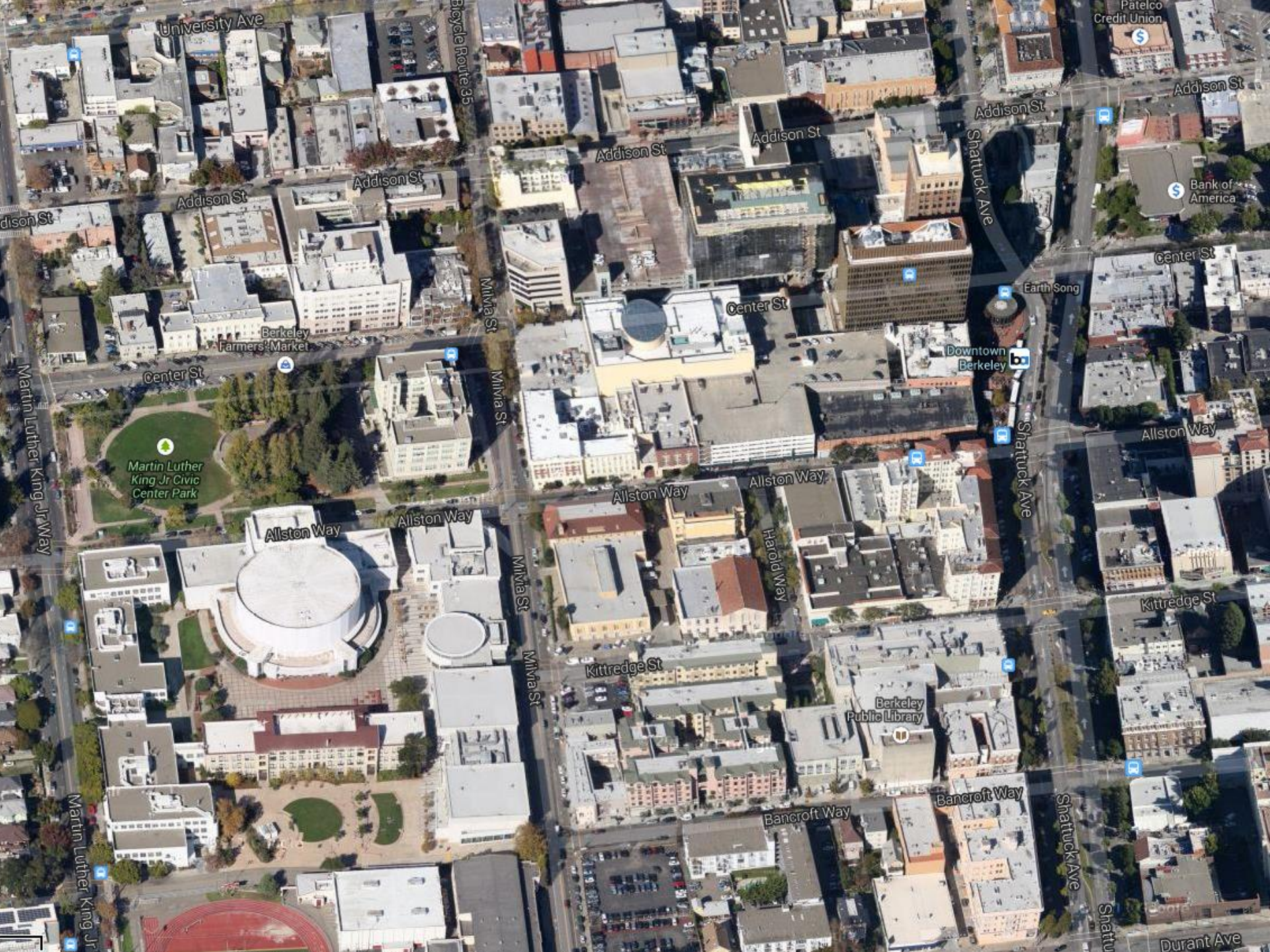


SECURITY

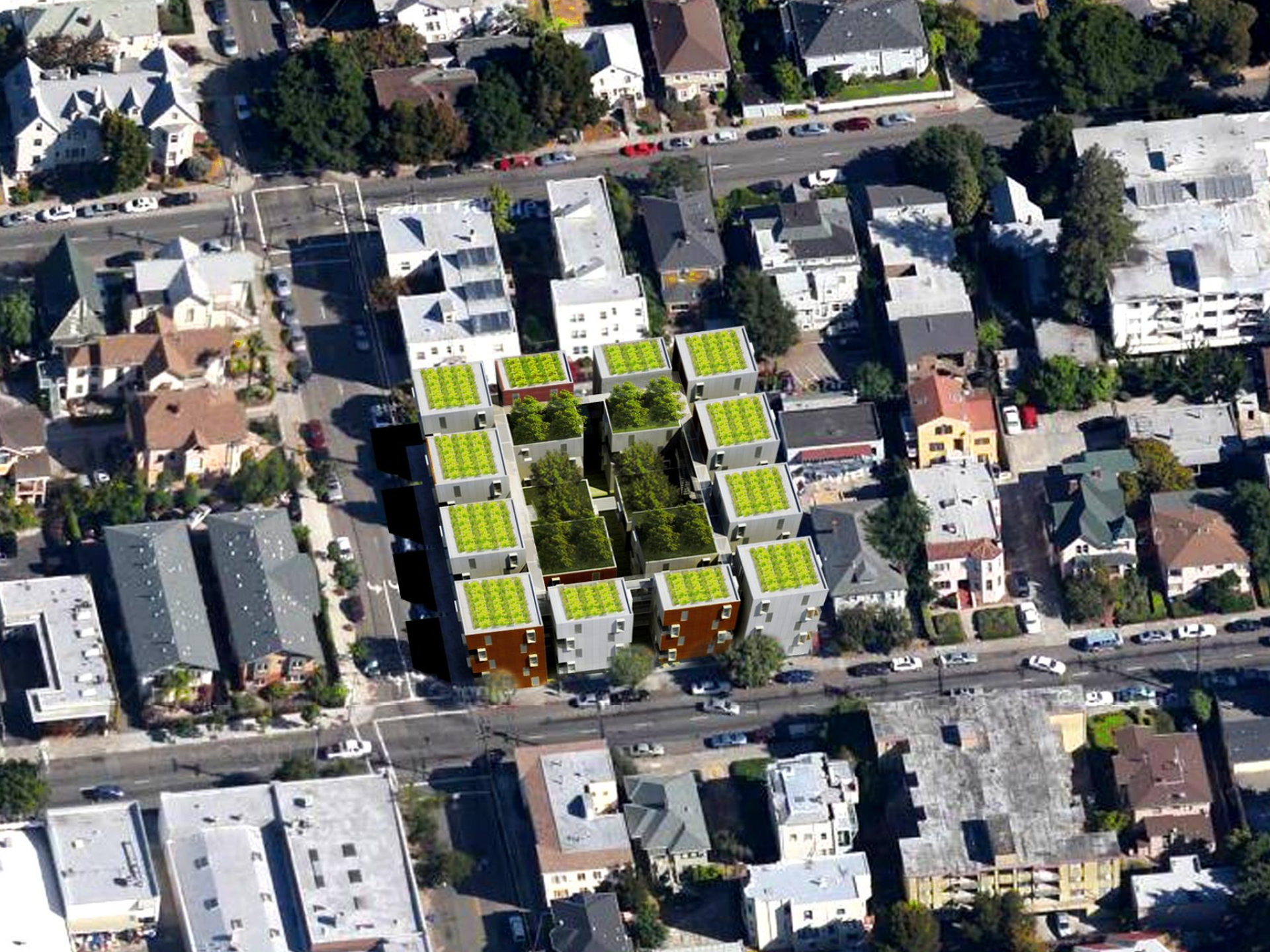
- ON-SITE SECURITY 10PM-3AM
- PROFESSIONAL MANAGEMENT 9AM-6PM
- ON-SITE RESIDENT MANAGER 24/7
- 24/7 MANAGEMENT PHONE LINE
- EXTENSIVE SECURITY CAMERAS



Captain Upson









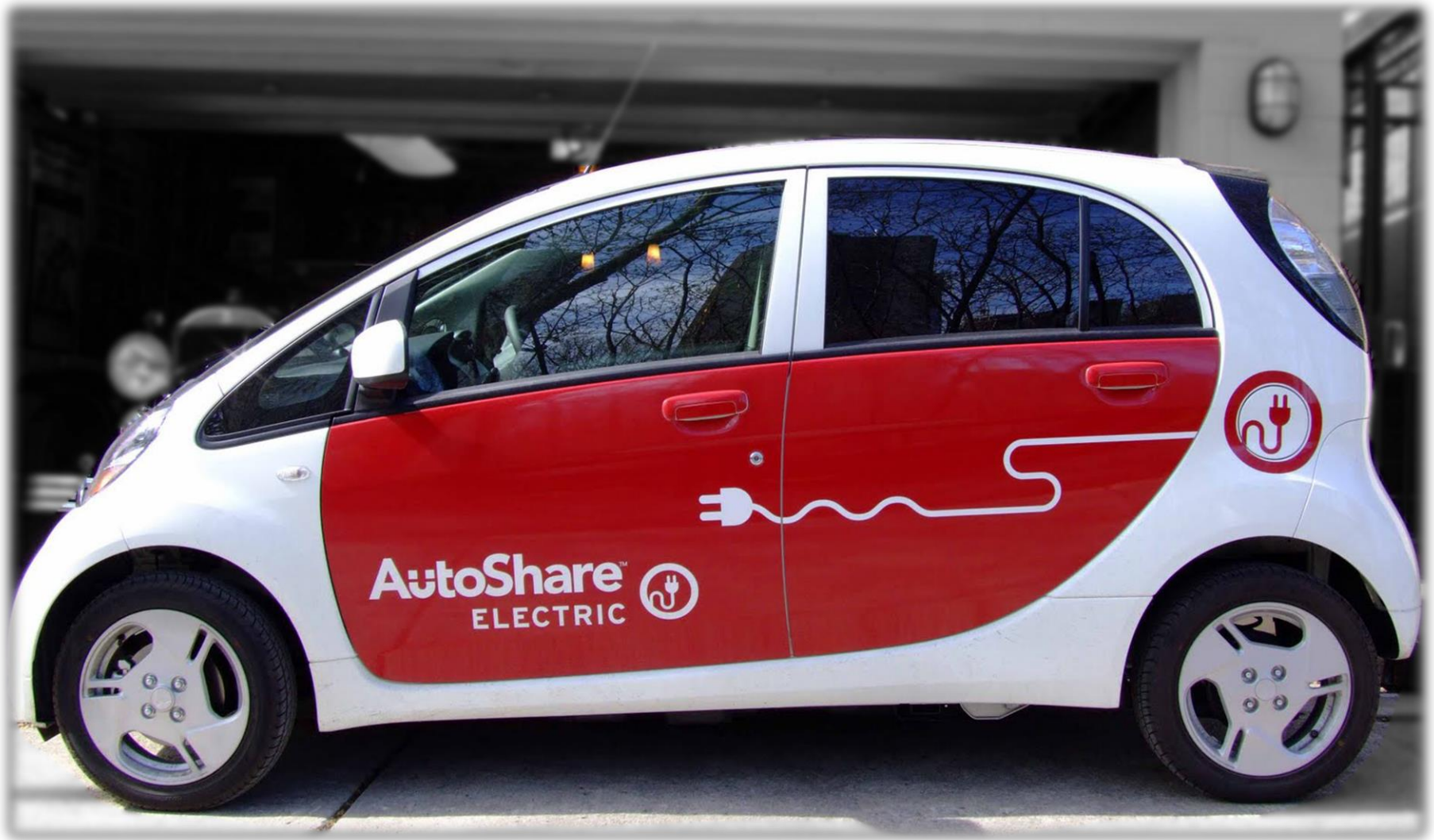
12,000 sf of Rooftop Farm

32,000 lbs Produce / Year

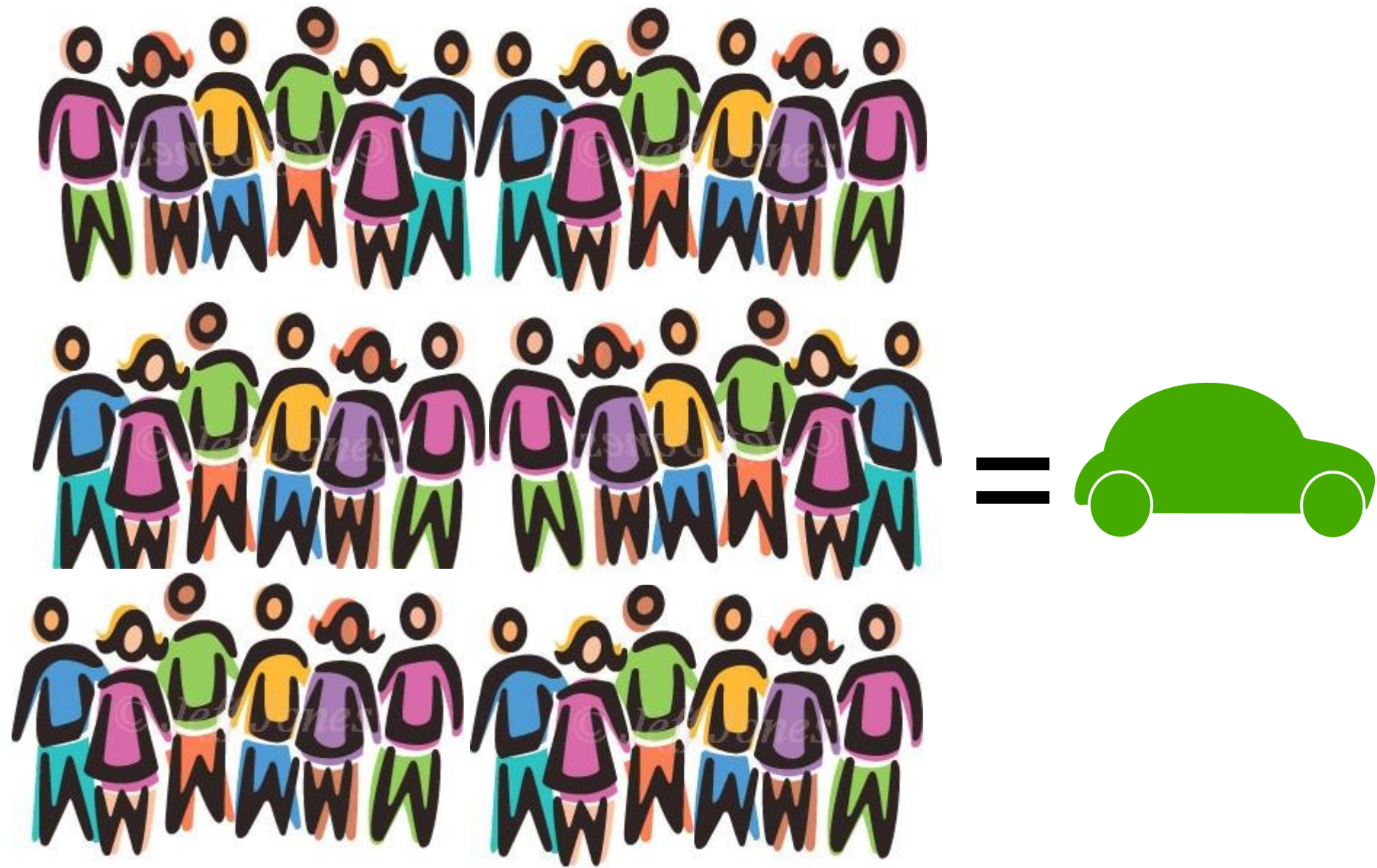
175,000 Servings / Year



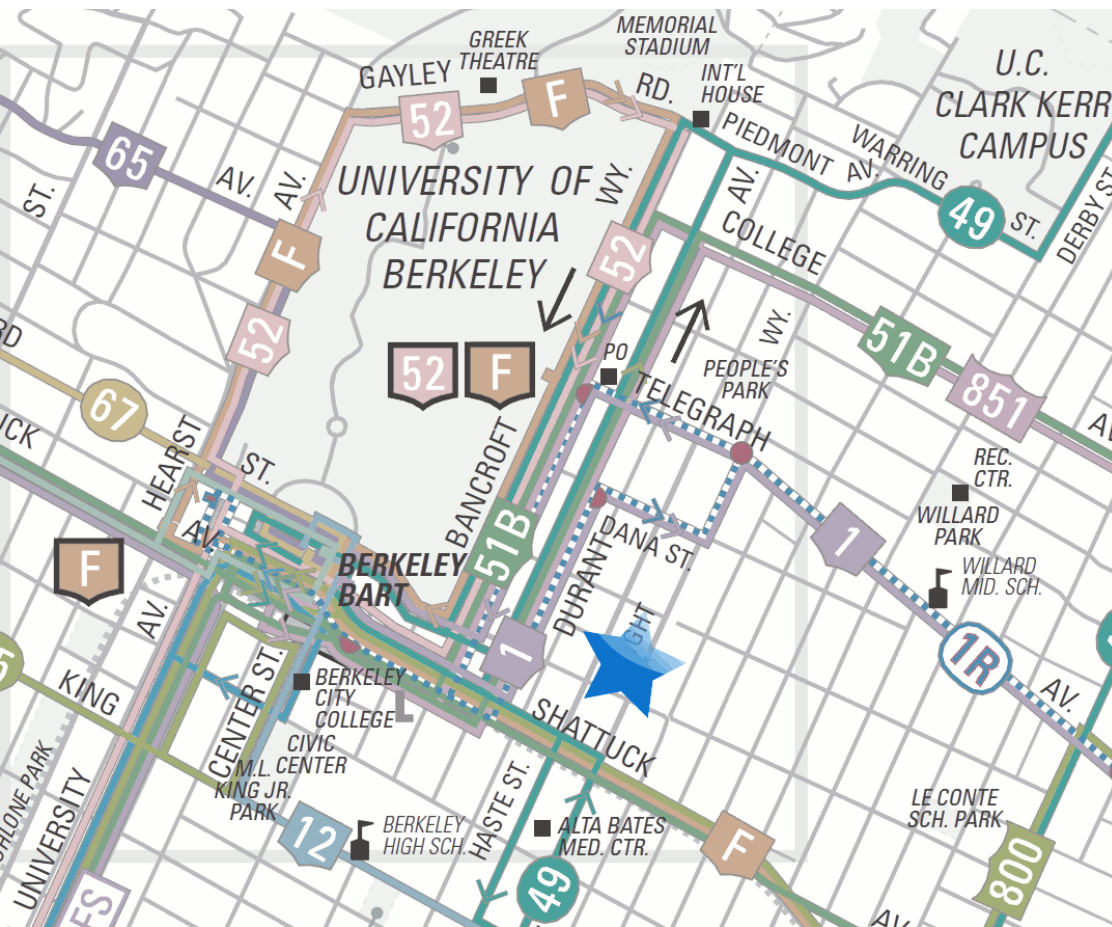
516



700 Students Surveyed to Evaluate Actual Parking Demand



Each Car Share Vehicle Serves at least 40 Residents



TRANSIT SERVICE

1,967 BUSES IN 1/4 MILE
270 WEEKDAY BART TRAINS
88 UCB SHUTTLES DAILY

Garden Village Transportation Plan

EasyPasses	\$480,000
CarShare memberships	\$472,000
Car purchase	\$240,000
Bikelink Cards	\$70,800
Pedestrian Trunks	\$12,320
Bike Repair Station	\$2,000
TOTAL	\$1.277 million





77 Student-Oriented Apartments

41 – 4 Bedroom, 36 – 2 Bedroom

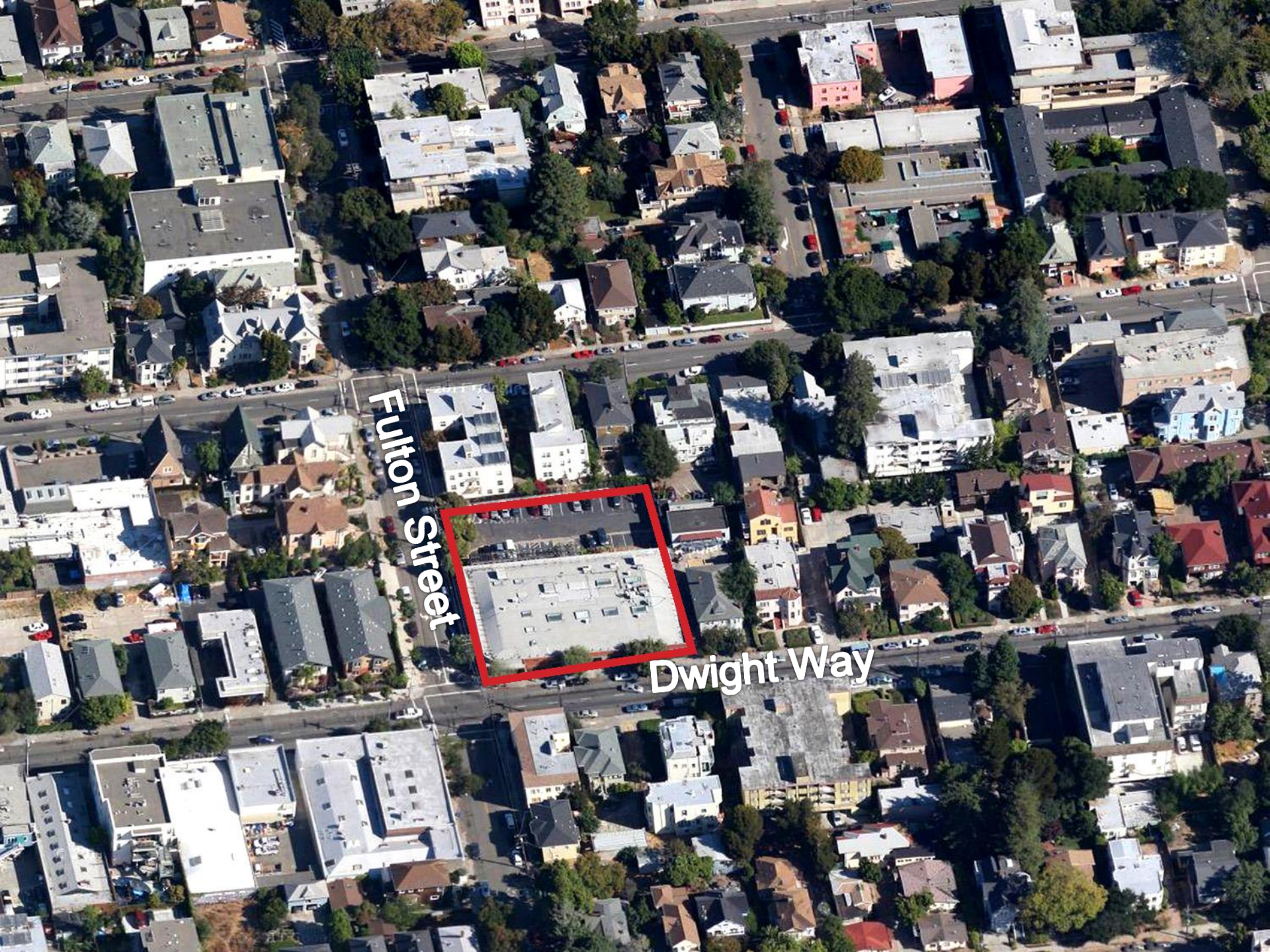
7 Very-Low Income Units

4-10 Alternative Fuel Car Share Vehicles

234 Bicycle Parking Spaces

Rooftop Farm

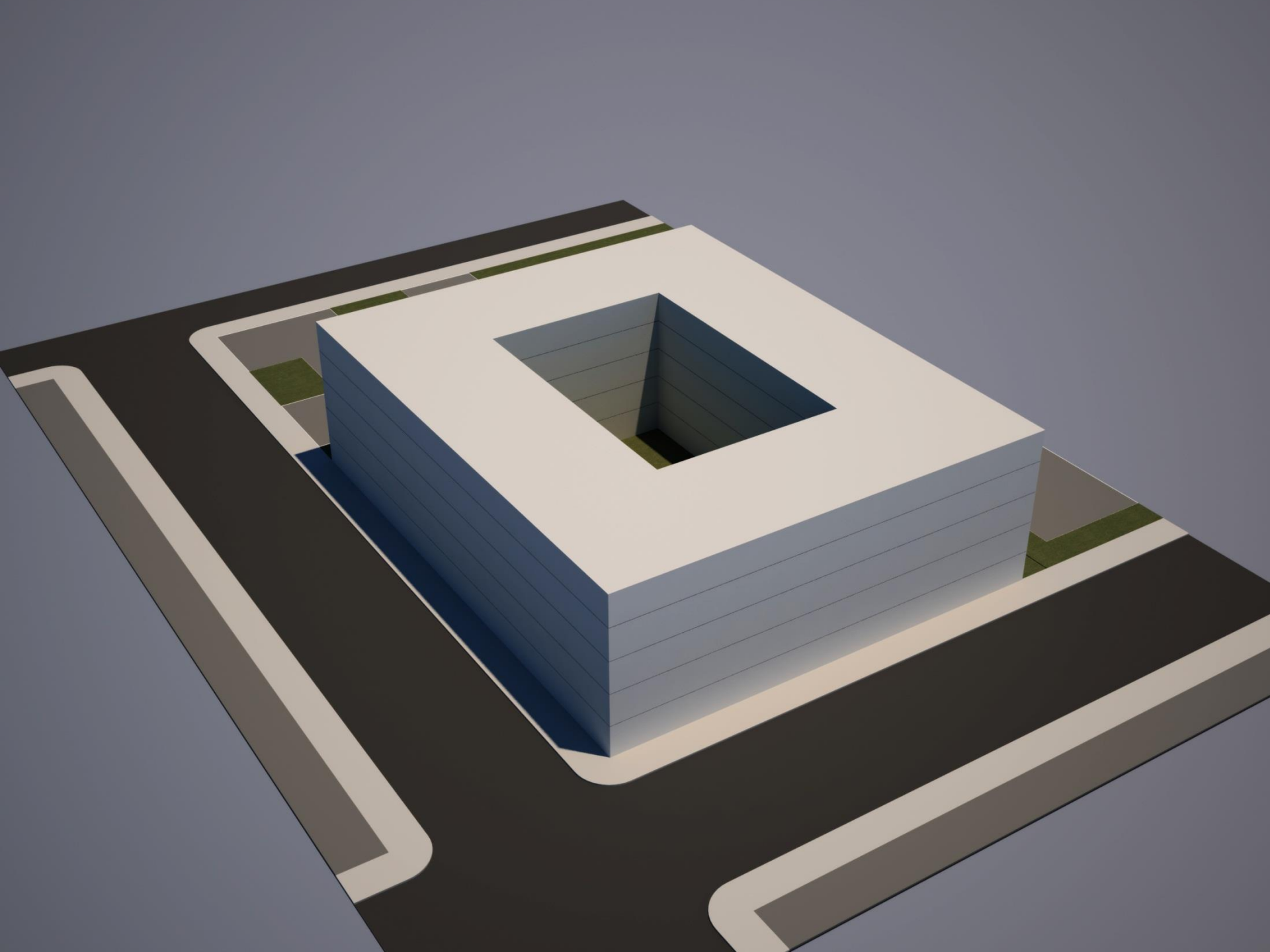


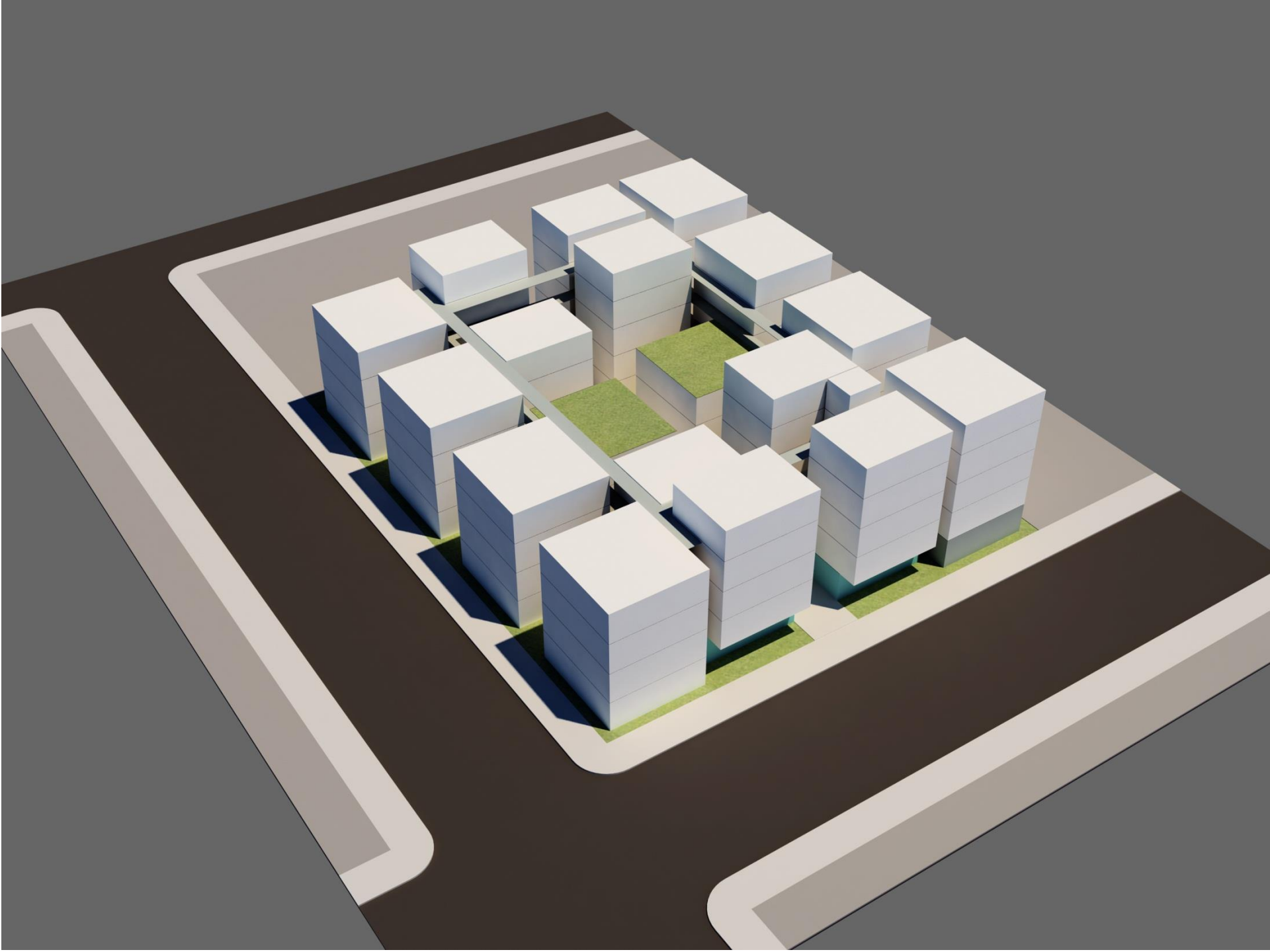


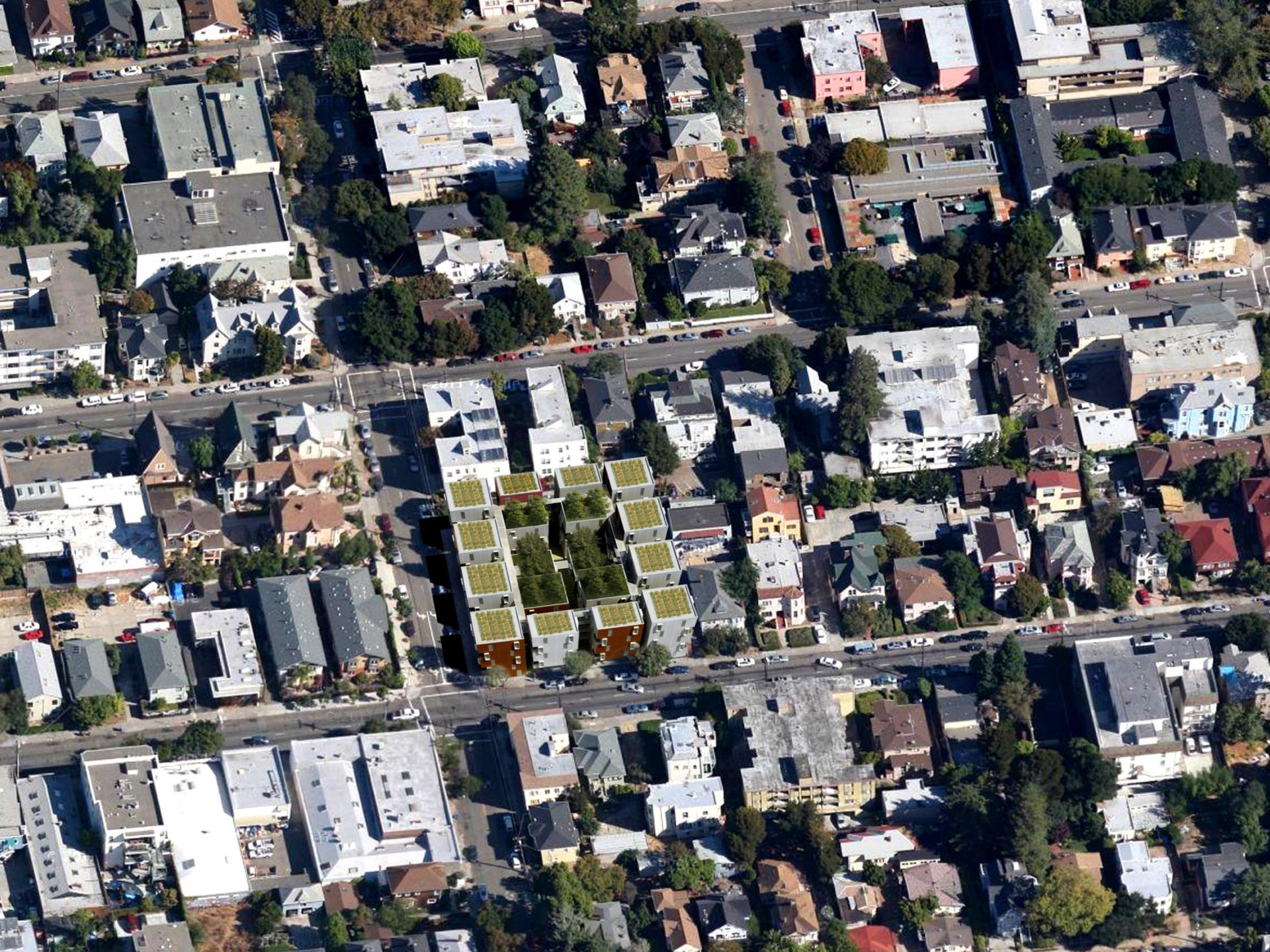
Fulton Street

Dwight Way











Height
Setbacks
Balconies

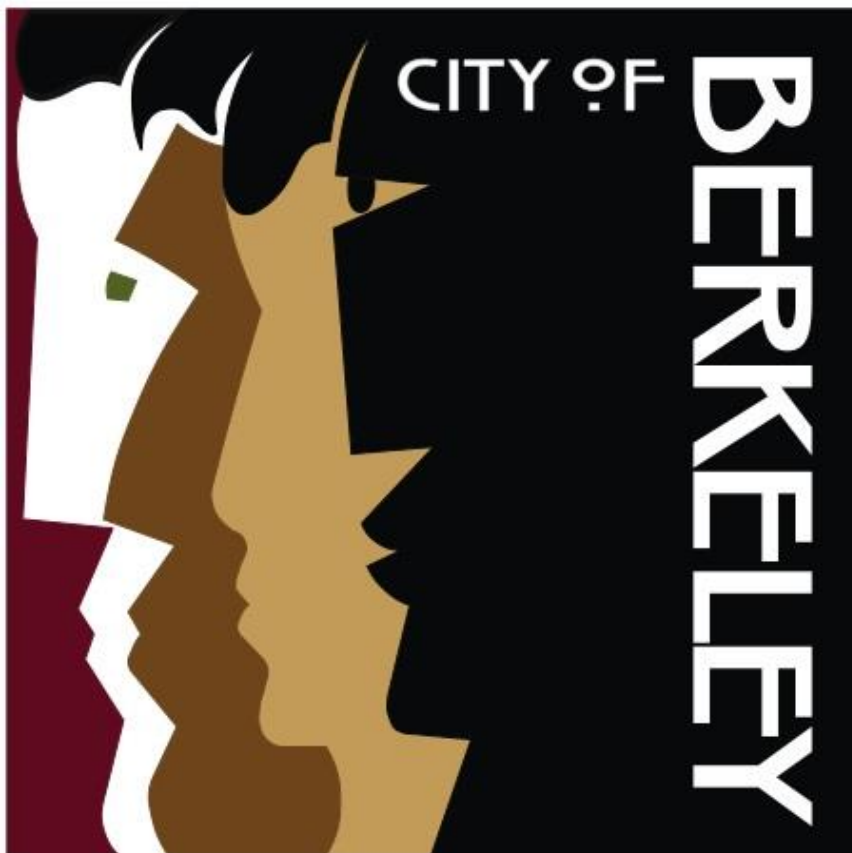












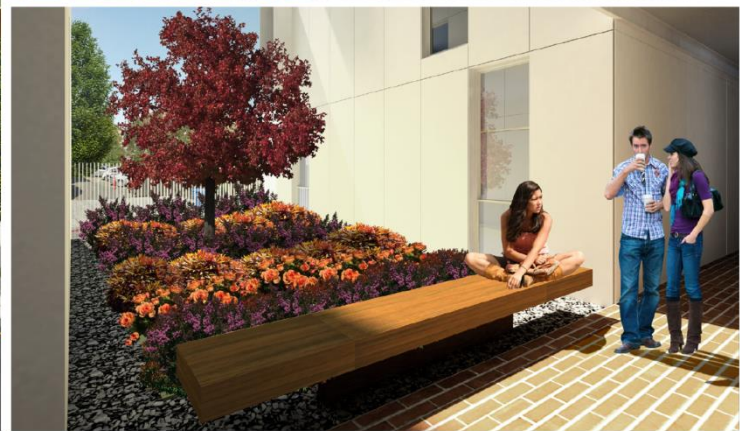
General Plan

Southside Plan

Climate Action Plan

ZAB Hearing

October 10, 2013



Garden Village | 2201 Dwight Way